

Integrated **WATER** Services, Inc.

IWS Completes Construction of Unique Below Grade Dual Membrane Treatment Project on California Coast

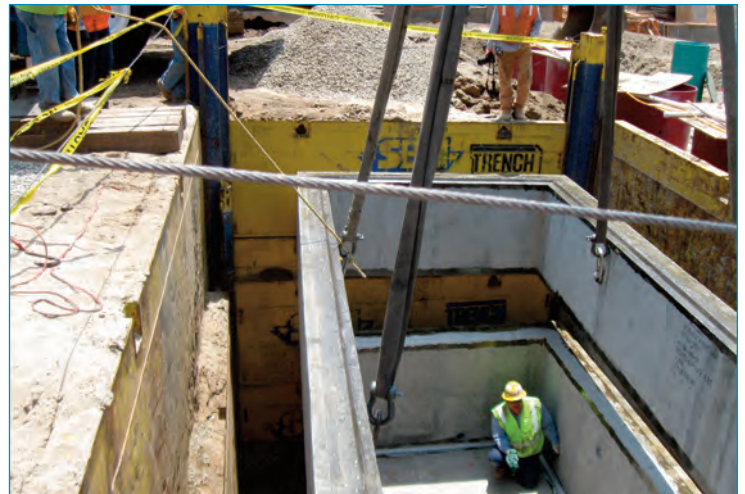


IWS was contracted to complete the construction and Installation of two (2) independent wastewater treatment plants and related equipment for a private development company that was constructing two high end restaurants along Pacific Coast Highway in Malibu, CA. The two treatments systems are dedicated to servicing this \$20 million commercial development complex,

which features two world class restaurants. IWS worked with the project engineer and the development team to assist in the layout of the treatment system to address constructability issues. The project was unique in that all the treatment system components are located below grade due to the limited real estate available for the building and parking. Due to the loca-



Tank with slip rail shoring



Installing vault in shored area



Installing engineered fill for leachfield



Completing leachfield

tion in sandy soil and proximity to the Pacific Ocean and tidal influences on groundwater, the underground work required extensive dewatering and shoring systems.

During the dewatering phase, IWS pumped and treated over 2 million gallons of groundwater and discharged it directly into the ocean after obtaining the appropriate NPDES discharge permits.

The scope of work included furnishing and installation of

- Two 25,000 GPD Membrane Bio Reactors (MBR)
- Installation of multiple 20,000 to 30,000 gallon fiberglass tanks
- Installation of concrete vaults
- Installation of UV disinfection Systems
- Mechanical and Civil Construction



Pouring concrete tank cover pad

- System Controls and Electrical in addition to System Integration with facility operations
- System testing, start-up and operation and Maintenance during initial operational period
- Site restoration



Installing control panel in vault



MBR Vault

For More Information Contact

West, Northeast Regions Peter C. Balas (pcbalas@integratedwaterservices.com) Tel: 925-895-3895
 Jay Alman (jalman@integratedwaterservices.com) Tel: 707-291-5283

Southwest, Midwest, Southeast Regions Jeff Thomas (jthomas@integratedwaterservices.com) Tel: 720-221-4366
Environmental Services (PES, LLC) Jonathan R. Bonser (jrbonser@pescontractors.com) Tel: 970-669-2277